



Mini-Com® Recessed Modular Faceplate Patch Panels

- 3" recessed feature eliminates patch cord interference with cabinet doors and improves bend radius protection
- Release snap feature on faceplate allows front access to installed modules
- Accept Mini-Com® Modules for UTP, fiber optic, and audio/video, which snap in and out for easy moves, adds, and changes

- Labels included for easy port identification, replacement label/label covers available
- Mount to standard EIA 19" racks or 23" racks with optional extender brackets



CPPL24WRBLY



CPPL48WRBLY

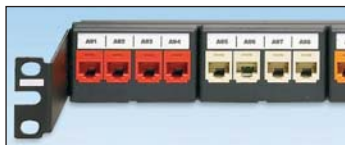


C4PPLK

Part Number	Part Description	No. of Rack Spaces [^]	Std. Pkg. Qty.	Std. Ctn. Qty.
CPPL24WRBLY	24-port recessed patch panel with labels, supplied with six factory installed CFFPL4 type front removable snap-in faceplates. Designed for use with racks and cabinets.	1	1	10
CPPL48WRBLY	48-port recessed patch panel with labels, supplied with twelve factory installed CFFPL4 type front removable snap-in faceplates. Designed for use with racks and cabinets.	2	1	10
C4PPLK	Replacement label/label cover kit for Mini-Com® Modular Patch Panels with Labels (CPPL24WBLY, CPPL48WBLY, CPPL24WRBLY, CPPL48WRBLY) and Mini-Com® Modular Furniture Faceplates with Labels (CFFPL4, CFFHSL4, CFFPEBSL4). Each kit contains six labels and six clear label covers per bag.	—	1	10

[^]One rack space = 1.75" (44.45mm).
M6 and #12-24 mounting screws included.

Component Labels for Mini-Com® Recessed Modular Faceplate Patch Panels



Suggested Label Solutions for TIA/EIA-606-A Compliance				
Patch Panel Part Number	Laser/Ink Jet Desktop Printer Label	TDP43ME Thermal Transfer Desktop Printer Label	PanTher™ LS8E Hand-Held Printer Label	Cougar™ LS9 Hand-Held Printer Label
CPPL24WRBLY CPPL48WRBLY	C261X035Y1J	C261X035Y1T	C261X035Y1C	T038X000FJC-BK‡

For complete labeling solutions and product information, reference charts on pages O.1 – O.22 of SA-NCCB51.

‡For non-adhesive labeling solution, do not remove liner from label.

Mouser Electronics

Authorized Distributor

Click to View Pricing, Inventory, Delivery & Lifecycle Information:

Panduit:

[CPPL24WRBLY](#) [C4PPLK](#) [CPPL48WRBLY](#)